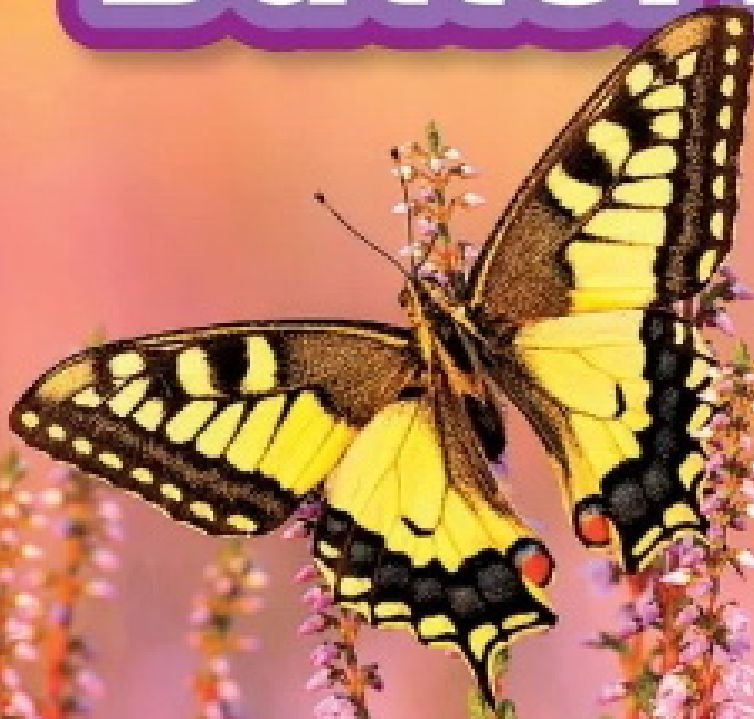


Pre-  
reader

# Flutter, Butterfly!



Shelby Alinsky

 NATIONAL  
GEOGRAPHIC

Washington, D.C.

## VOCABULARY TREE

MY BACKYARD

ANIMALS

BUTTERFLY

### WHAT IT DOES

lays an egg  
hatches  
crawls  
eats  
grows  
changes  
flutters

### LIFE CYCLE

egg  
caterpillar  
pupa  
butterfly



old world swallowtail butterfly





A butterfly lands on a plant.



butterfly

4



egg

It lays an egg.  
The new egg is yellow.

5



6

Many days pass.  
The egg turns brown.

7

A caterpillar grows  
inside the egg.



Then the egg hatches!  
The caterpillar comes out.

egg



The young caterpillar is black.

caterpillar







The caterpillar crawls  
on plants.

10



It looks for food.  
It eats leaves.

11



The caterpillar grows bigger.

It turns green.





The caterpillar keeps eating.

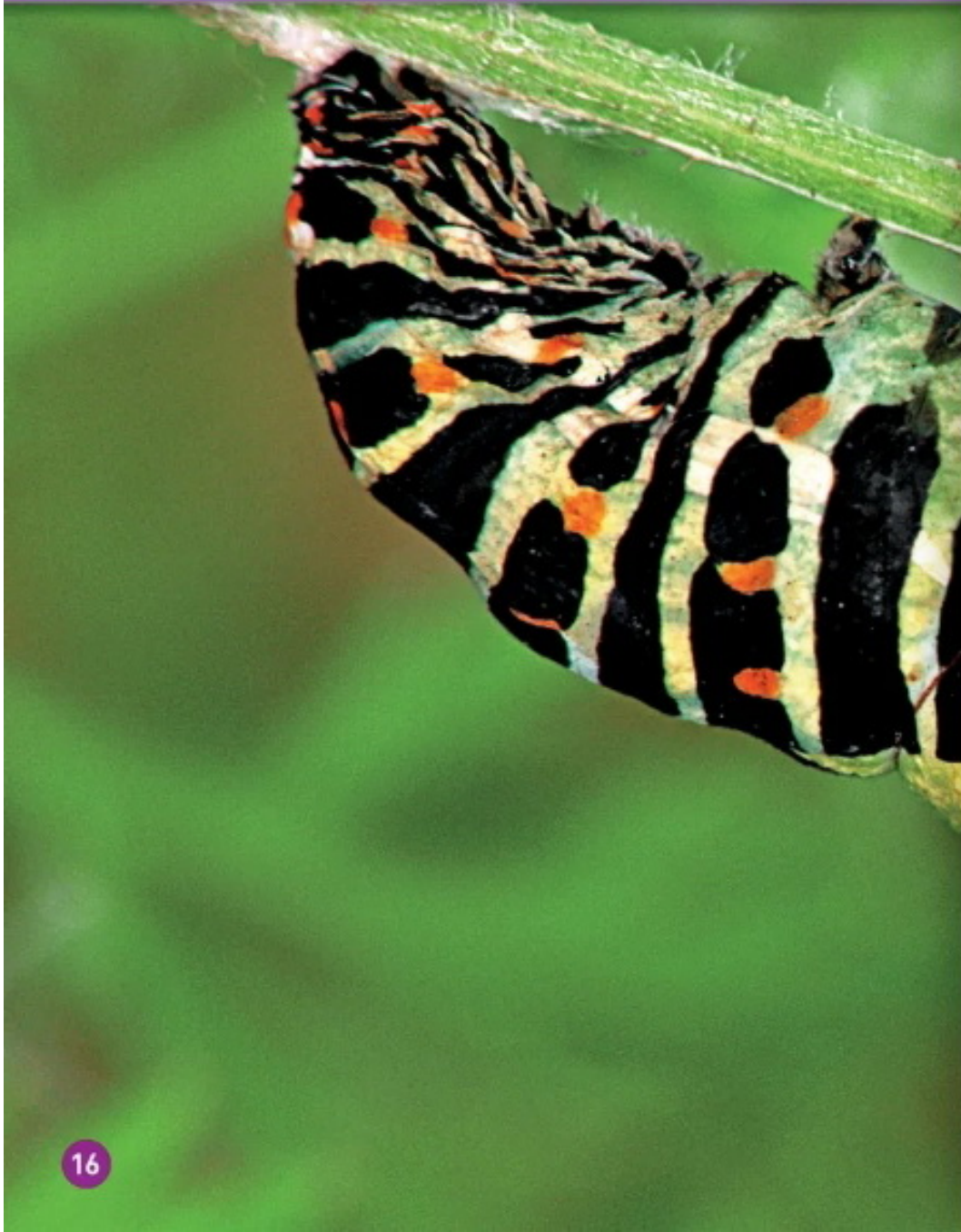


It eats more leaves.





After many weeks,



the caterpillar changes.







pupa



It's inside a hard covering.

18

Now it's a pupa.

19



Weeks pass.  
A butterfly comes out!



butterfly



Flutter, butterfly!



# Old World Swallowtail Life Cycle



## YOUR TURN!

Match the word to the photo.  
Use your finger to make a line  
from the word to the photo.

EGG

BUTTERFLY

CATERPILLAR

PUPA



The answer is on the next page.



The publisher gratefully acknowledges the expert content review of this book by Dr. William O. Lamp, University of Maryland, Department of Entomology, and the expert literacy review by Susan B. Neuman, Ph.D., professor of early childhood and literacy education, New York University.

Copyright © 2015 National Geographic Society  
Published by the National Geographic Society,  
Washington, D.C. 20036. All rights reserved.  
Reproduction in whole or in part without written  
permission of the publisher is prohibited.

Trade paperback ISBN: 978-1-4263-2117-7  
Reinforced library edition ISBN: 978-1-4263-2118-4

**Project Editor:** Shelby Alinsky  
**Series Editor:** Shira Evans  
**Art Director:** Callie Broaddus  
**Designer:** Allie Allen  
**Photo Editors:** Lori Epstein  
**Rights Clearance Specialist:** Michael Cassady  
**Editorial Assistant:** Paige Towler  
**Design Production Assistants:** Sanjida Rashid  
and Rachel Kenny  
**Managing Editor:** Grace Hill  
**Production Editor:** Joan Gossett  
**Production Manager:** Lewis R. Bassford  
**Manufacturing Manager:** Rachel Faulise

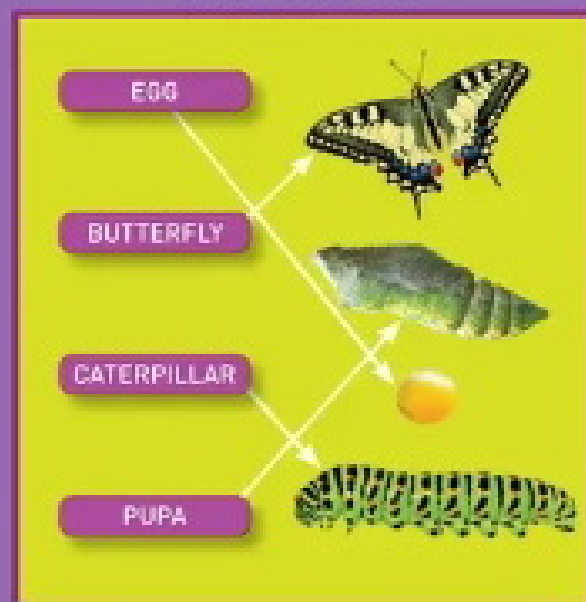
#### Photo Credits

MP = Minden Pictures; NPL = Nature Picture Library  
Cover, Katsuomi Matsumoto/Nature Production/  
MP; 1, blickwinkel/Alamy; 2-3, Jussi Murtosaari/  
NPL; 4, Terry Whittaker/2020VISION/NPL; 5, Silvia  
Reiche/MP; 6-7, Robert Pickett/Visuals Unlimited/  
Corbis; 8-9, Robert Pickett/Visuals Unlimited/  
Corbis; 10-11, Hans Christoph Kappel/NPL; 12-13,  
Flickr Open/Getty Images; 14, Silvia Reiche/MP;  
15, Igor Semenov/Shutterstock; 16-17, Hans Chris-  
toph Kappel/NPL; 18-19, Hans Christoph Kappel/

NPL; 20, Stephen Dalton/NPL; 21, Hans Chris-  
toph Kappel/NPL; 22 (egg), Silvia Reiche/MP; 22  
(caterpillar, pupa, butterfly), jps/Shutterstock; 23  
(butterfly), Roger Meerts/Shutterstock; 23 (pupa),  
Jose B. Ruiz/NPL; 23 (egg), Silvia Reiche/MP; 23  
(caterpillar), PeJo/Shutterstock; 24 (butterfly),  
Roger Meerts/Shutterstock; 24 (pupa), Jose B.  
Ruiz/NPL; 24 (egg), Silvia Reiche/MP; 24 (caterpil-  
lar), PeJo/Shutterstock; 24 (butterfly, bottom), jps/  
Shutterstock

Printed in the United States of America  
15/WOR/1

## ANSWER:



National Geographic supports K-12 educators with  
ELA Common Core Resources. Visit [natgeoed.org/](http://natgeoed.org/)  
commoncore for more information.

