

angel



arrow



apple



Aa



ant



axe



Bb

balloon



bird



bee



bear



butterfly

cloud

Cc

COW

cat

carrot

cactus

Dd



duck



donut



dog

dish



drum

Ee

elephant



eggplant

eight



egg



eraser



Ff



fish



fox



fire



flower



frog



Gg

giraffe

grape

guitar

girl

gift

Hh



house



hat



hot dog



horse



hippo



Ii



idea

ice cream

indian

ice

island

Jj

juice



jam



joker



jeans



jigsaw



Kk



koala



kiss



kite

king

kiwi



LI

ladybug



lion



leaf



lemon



light



Mm



mouse

magic

mushroom



moon



monkey



Nn



note



nightingale



nut



newt



nest

Oo



ostrich



owl

onion



orange



octopus



Pp

panda

pig

paint brush

palette

pencil



Qq

queen

question mark



quail



quill



quoll

rocket



rainbow



Rr

rabbit

rain



rose



Ss



star



sun



snow



sheep



spider

Tt

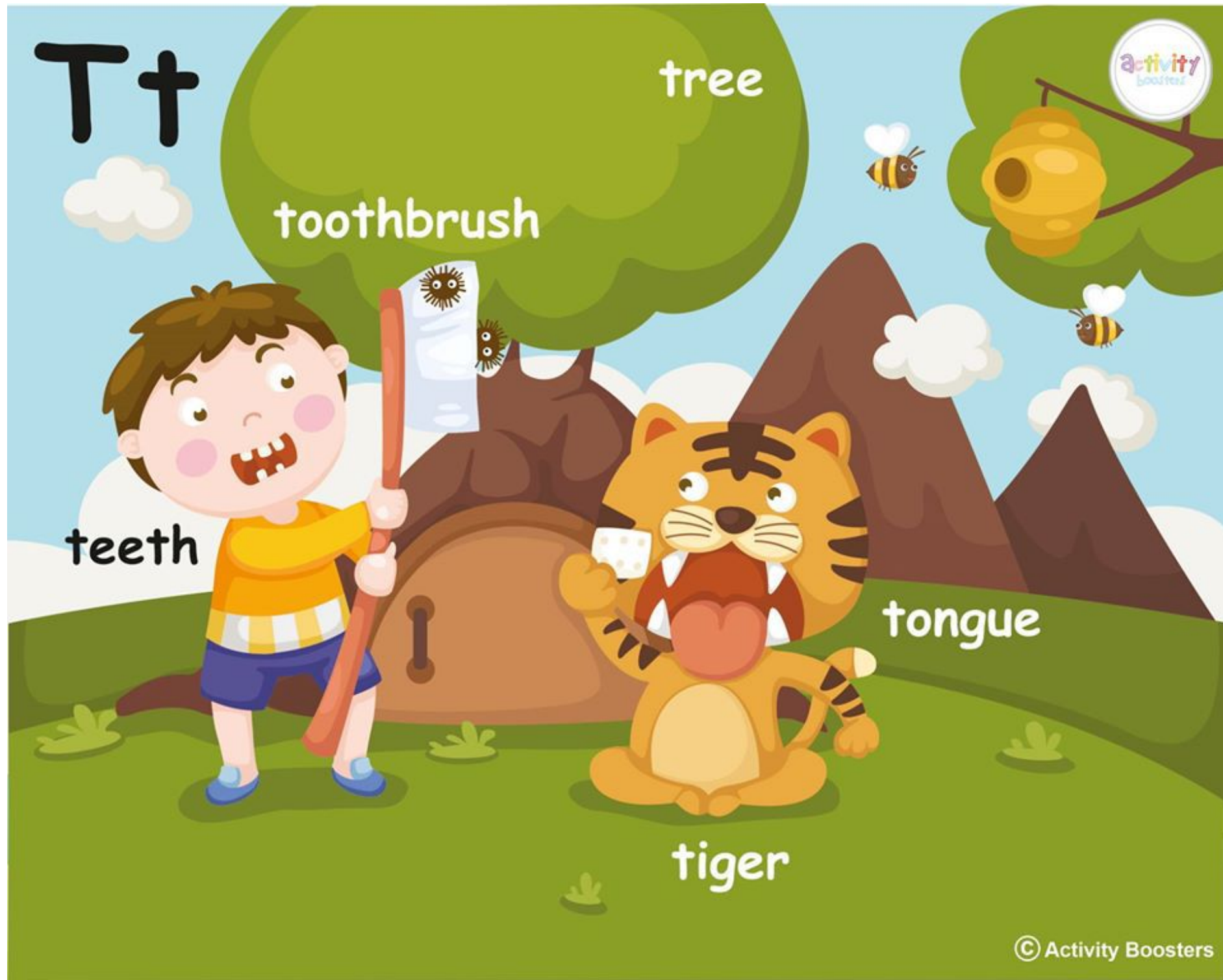
tree

toothbrush

teeth

tongue

tiger



Uu



UFO

unicorn



university



u-turn



umbrella



Vv



village

violin

vampire

van

vegetables



Ww

watch



window



water



worm

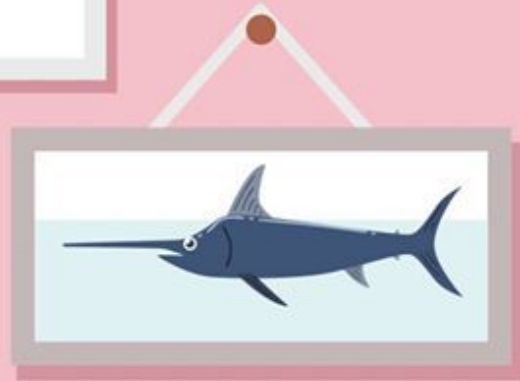
wine



Xx



x-ray



xiphias



fox



box



xylophone

Yy

yak

yacht

yellow

yoyo

yogurt



zoo

Zz

zoo

zucchini

zip

zebra

zigzag