



**My City**  
**- Beijing, the Capital**

# Reward System



# Warm Up

## Beijing, My City

There's a lot to learn about  
Beijing, Beijing.

There's a lot to learn about.

Let's get started!

Beijing is the capital, capital, capital.

Beijing is the capital. It's important.

Beijing has a long history, history, history

Beijing has a long history,

Let's learn about it!



# Tell Me about Beijing

What do you know about Beijing?

Beijing is...



# Tell Me about Beijing



This is the Bird's Nest. It is in Beijing. Beijing is the **capital** of China. The **capital** is the most important city in the country.

# Getting around Beijing



People are walking on Wangfujing **Street**.

A **street** is a small road within a town or city.  
**Streets** may have houses or shops on one or both sides. There are many busy **streets** in Beijing.

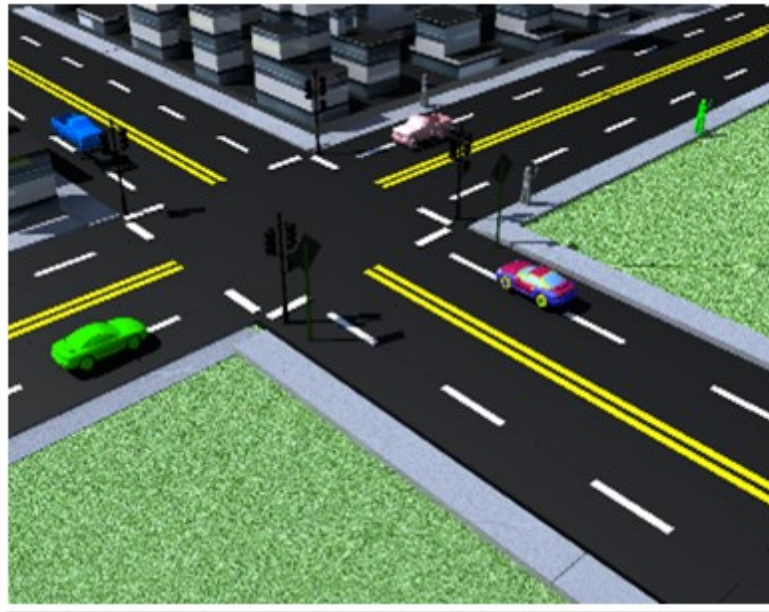
# Getting around Beijing



While driving, cars move slowly if they are in a **traffic jam**.

A **traffic jam** is when too many vehicles are too close together causing traffic to move very slowly. It is almost impossible to move because traffic is at a standstill, and drivers sit and wait in their cars for long periods of time.

# Getting around Beijing

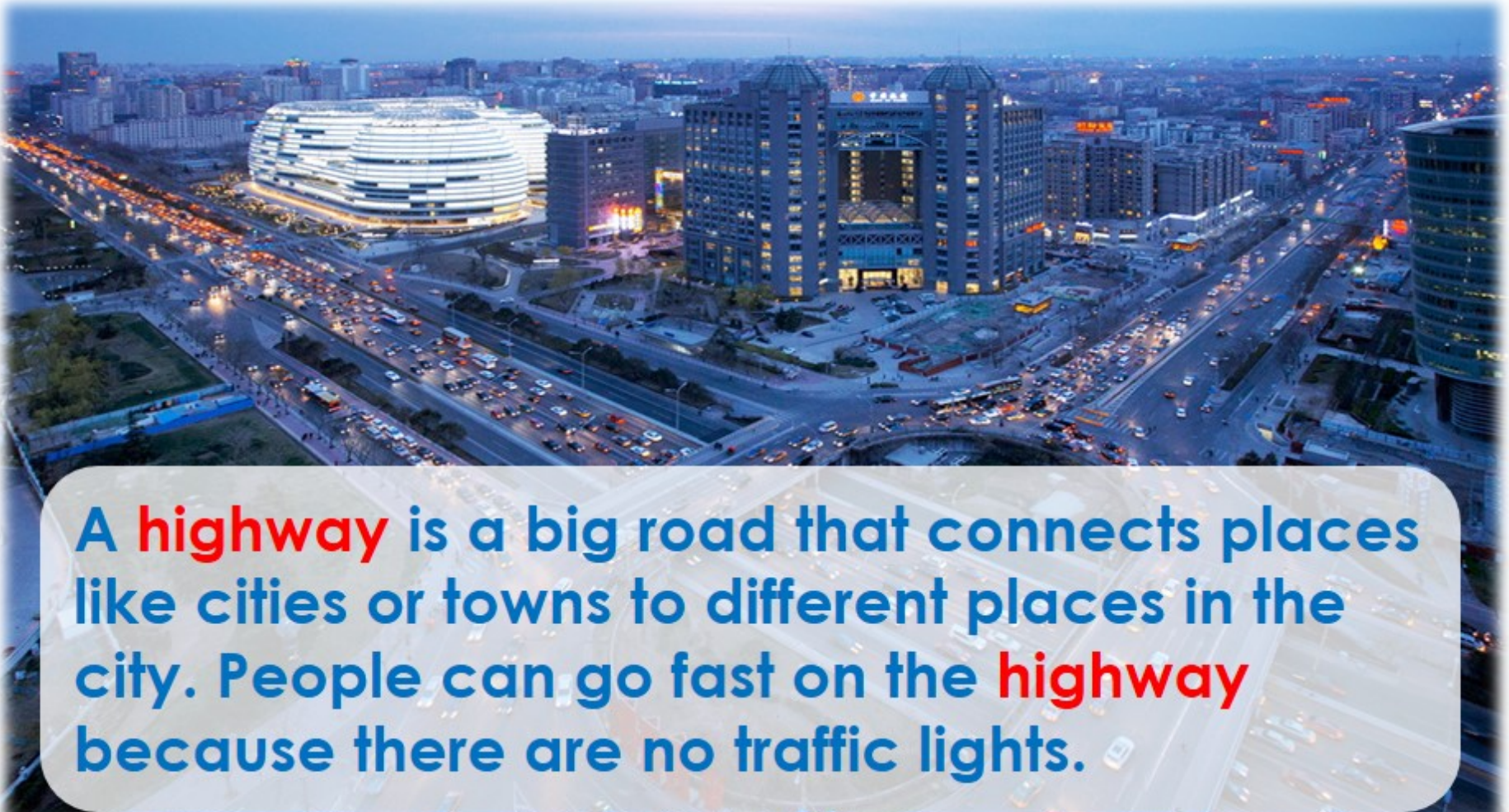


Here are some cars waiting to cross the **intersection**.

An **intersection** is a place where roads or streets meet. **Intersections** can have a lot of traffic.



# Getting around Beijing



A **highway** is a big road that connects places like cities or towns to different places in the city. People can go fast on the **highway** because there are no traffic lights.

# Vocabulary

**population** - the number of people living in one place



Beijing has a large **population**.

Most capital cities have a large **population**.  
Do you know your city's **population**?

# My City



Beijing is a big city, both in its size and its population. It is the **capital** of China and is located in northern China.



**Beijing is a very old and important city in China. Beijing has been a city for more than 3,000 years. It has been a capital city for most of that time.**



**Beijing has four seasons. In winter, it is cold and dry. In summer, it is hot and humid. In fall and spring, it is cool and dry.**

# After-Reading Questions

1. What is the capital of China?
2. In summer, how's the weather in Beijing?
3. According to the article, why do we say  
Beijing is an old and important city?

# Let's Compare

Tell me more!	Your City	My City
How big is...?		
How old is...?		
What is the population in...?		
How's the weather in...?		

# Grammar Corner

Conjunctions are connecting words.



so

for

but

or

because

and

*The Glue in Sentences*



# and

1. Beijing highways are long.
  2. Beijing highways are wide.
- ➔ Beijing highways are long and wide.

1. Beijing is the capital of China.
  2. It is located in northern China.
- ➔ Beijing is the capital of China, and it is located in northern China.

**Now you try!**

# Lion Run



different kinds of trees

Beijing Botanical Garden has beautiful flowers

other works of art

798 Art District shows interesting paintings

I really like the palace there

The Summer Palace has beautiful gardens,

we saw many animals

We walked around the Beijing  
Zoo,



# Sight Words

Beijing



New York

Beijing is as beautiful as New York.

# Sight Words



We will visit the Summer Palace and then the Great Wall.

# Word Family

# -ire

fire



# -ure

picture



# Word Family

-ire



wire



tire



sire

-ure

measure



injure



sure



# Which word is missing?

Evaluate

picture

fire

wire

measure

tire

sure

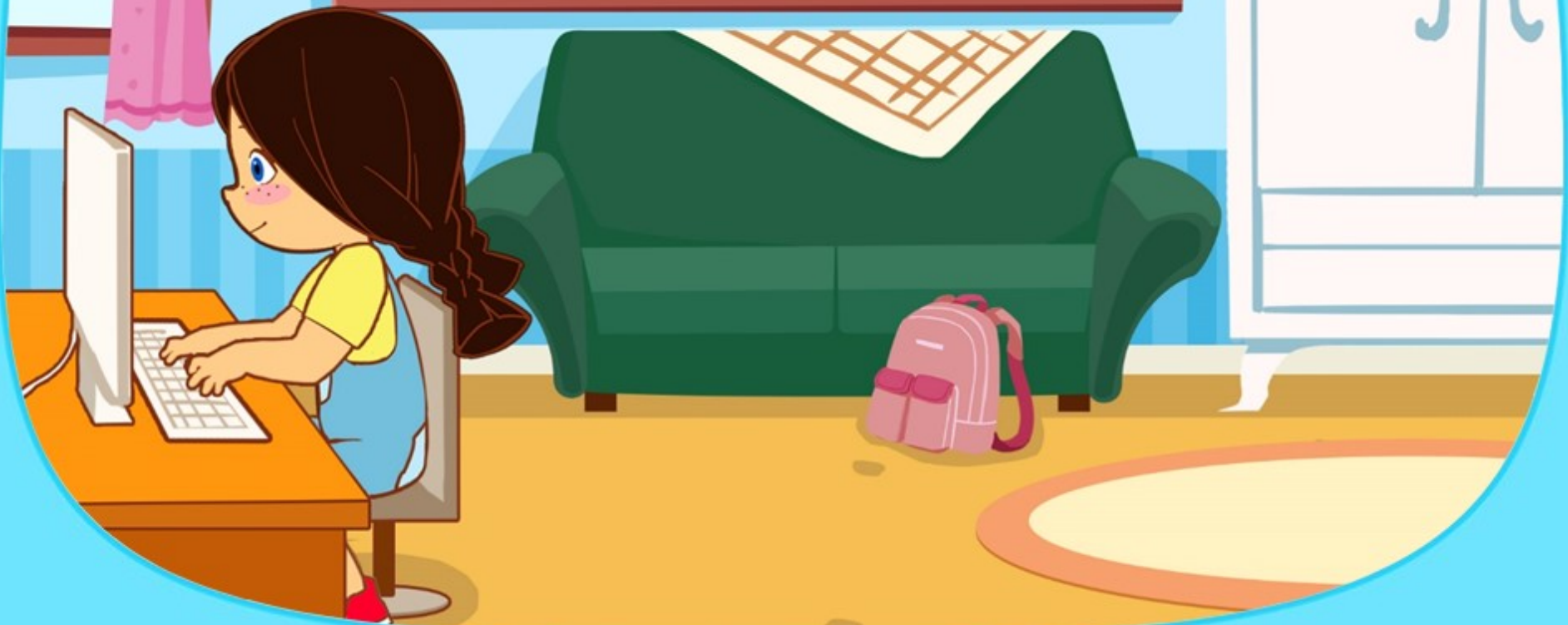


# Free Talk





Enrichment time!  
See you later!



VIP KID

