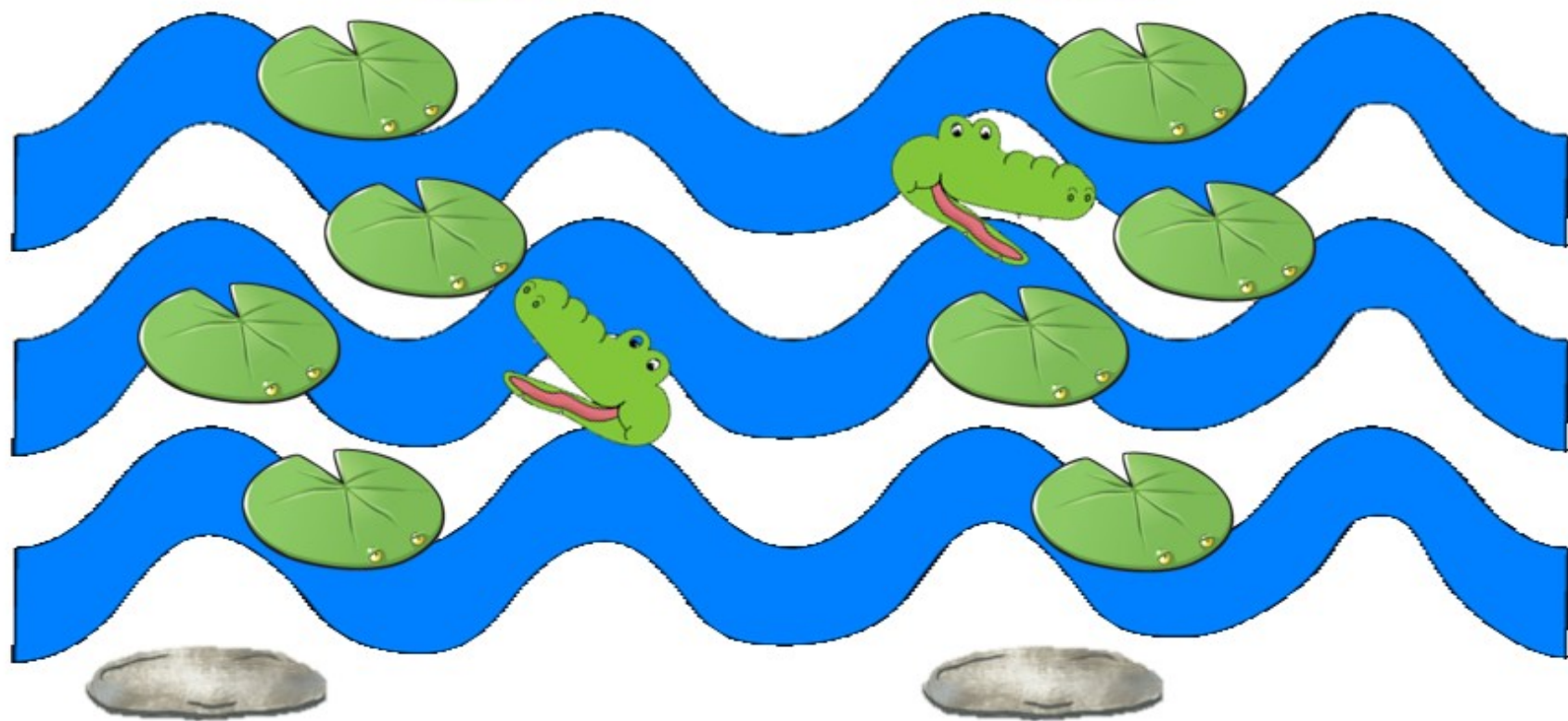


# Wild Animals

## Aquatic/Semi-aquatic Animals



# Reward System



# Warm Up

## Turtle, Turtle

Turtle, turtle moves so slow,  
Crawling, crawling, watch him go.  
At the pond he looks around,  
See his head move up and down.  
Turtle, turtle wants to swim,  
Now he slides and dives right in!



# Let's Talk

Can I ask a question?  
Where do frogs and turtles live?



Frogs and turtles are semi-aquatic animals. They live in the water and on land.

Where do hippos live?

Hippos find their homes in the river. They can also live in lakes.



# Vocabulary

**semi-aquatic animals** - animals that can live in the water and on land



A frog is swimming in the pond. Frogs are **semi-aquatic animals**.



A turtle is moving slowly on the sand. Turtles are also **semi-aquatic animals**.



A **frog** is jumping to hunt a fly.

**Frogs** can jump high and far. It is hard for other larger animals to catch and eat frogs because they are so good at jumping. Frogs like to eat flies.



A **turtle** is eating a worm on land.

**Turtles** move slowly. Turtles like to hunt for small fish when they dive into the pond.

# River Animals



Three **alligators** are in the river.

**Alligators** have short legs, strong, long tails, and a big mouth with many teeth. They can run and swim very fast. **Alligators** eat fish, birds, and other animals.



# River Animals



The **hippos** are sleeping by the river.

**Hippos** are very big and dangerous animals. **Hippos** eat a lot of plants by the river every day. They have very big teeth and short tails.

# River Animals



**Beavers** are eating wood for their food.

**Beavers** live in rivers. They have big, strong tails.

**Beavers** use wood to build their homes on the river.

# Pre-Reading

Where do you think  
frogs and turtles live?



# Lake and Pond Animals

**Frogs** and **turtles** can both live in water and on land. What makes them the same? Both like lakes and ponds because there is fresh water. They can both swim in water.



# Lake and Pond Animals

However, frogs and turtles are different too. Frogs mainly eat insects. Turtles eat insects too, but they also eat a lot of plants. Frogs can jump on land. Turtles can only walk slowly on land.



# Reader Detective

1 Do turtles walk fast or slowly?

2 Would you keep a frog or a turtle as a pet?



# Same and Different

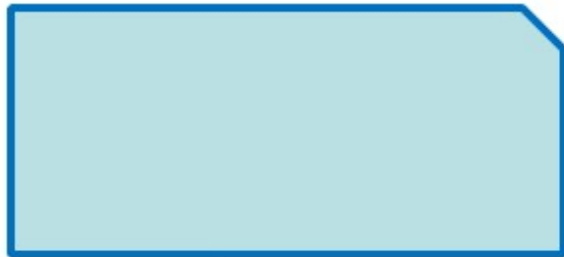


a frog



a turtle

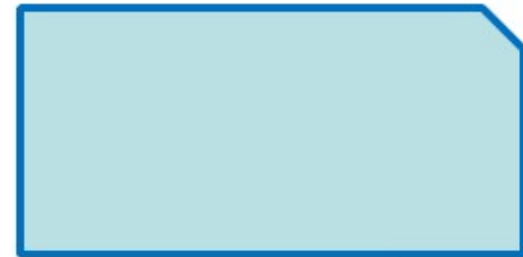
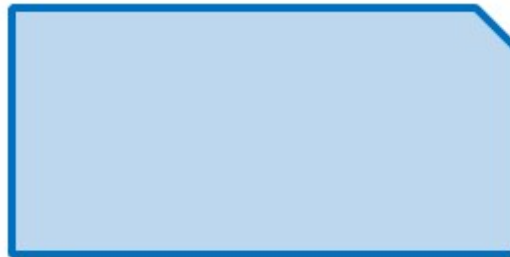
same



jumps on land

lives in water and on land

eats small insects and plants



eats insects

walks slowly on land

likes lakes and ponds

# Same and Different



a frog

Fill in the blanks and check your answers.



a turtle

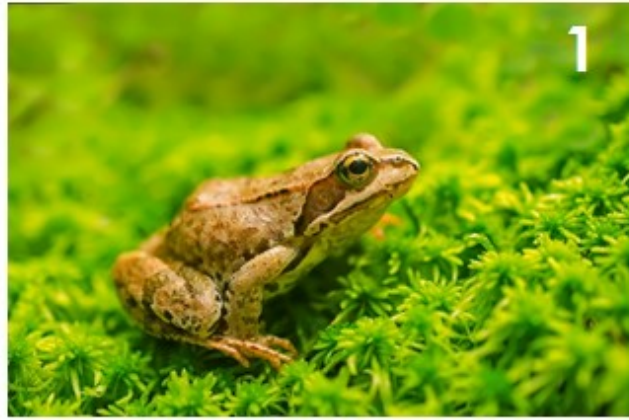
both

|               |                           |                               |
|---------------|---------------------------|-------------------------------|
| jumps on land | live in water and on land | walks slowly on land          |
| eats insects  | like lakes and ponds      | eats small insects and plants |

A frog \_\_\_\_\_. It \_\_\_\_\_. A turtle \_\_\_\_\_.  
 It \_\_\_\_\_. A frog and a turtle \_\_\_\_\_. They \_\_\_\_\_.



# Let's Talk



Where was the \_\_\_\_\_ living?

The \_\_\_\_\_ was living in

\_\_\_\_\_ and on \_\_\_\_\_.

# Let's Talk



Where were the \_\_\_\_\_ living?

The \_\_\_\_\_ were living in

\_\_\_\_\_ and on \_\_\_\_\_.

# Was or Were



A frog was swimming in the lake while the turtle was walking on the path.



The alligator \_\_\_\_\_ (eat) a fish while the frog \_\_\_\_\_ (eat) an insect.



The beavers \_\_\_\_\_ (build) their homes while the hippos \_\_\_\_\_ (eat) plants.



# Sight Words

over

ask

an

them

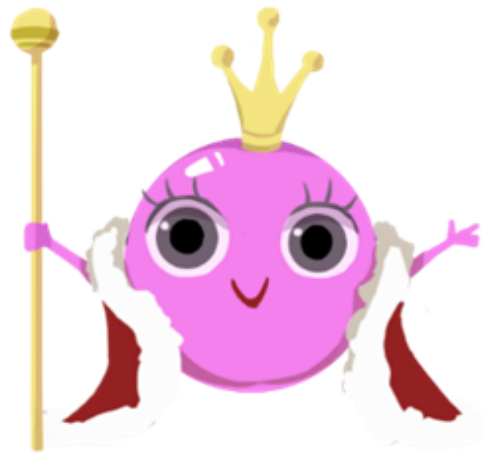
just

START

# Vowel Sound Review

Explain

vowel sound "i"



sit  
hip  
little  
wish

kite  
tide  
bite  
site

vowel sound "o"

clock  
hot  
sop  
pot

mode  
coke  
cope  
nose

# Vowel Sounds and Syllables

Syllables are beats of sound.

/a/ /e/ /i/ /o/ /u/



The number of syllables in a word equals the number of vowel sounds in a word.

# How many syllables?

hip

one syllable

frog

one syllable



hip-po

two syllables

To-ron-to

three syllables

# Let's Practice



phonic \_\_\_syllable(s)

animal \_\_\_syllable(s)

while \_\_\_syllable(s)

bobolink \_\_\_syllable(s)



# Match



The turtle was hunting for food.



The turtle was walking slowly in the grass.



The turtle was sleeping.

# Match



The alligator was running fast.



The alligator was eating fish in the river.



The alligator was swimming fast.

# Free Talk



If I could wish upon a star  
to be a semi-aquatic animal,  
which one would I want to be?  
Explain your answer.



# Writing Project



You've seen your goals for the final project.  
Now, let's discuss your draft on the next slide!



Lesson 8 — Project Introduction



Lesson 9 — Discuss Draft



Lesson 10 — Revise & Edit



Lesson 11 — Finish & Upload



#



Lesson 12 — Project Presentation



# Writing Project

#

Level 4 Unit 2  
Wild Animals-Writing 1

Brainstorming Activity: Choose three wild animals and write everything you know about them.

Choose a wild animal you want to write about and complete the graphic organizer.

Title: My Report on \_\_\_\_\_

Opening sentence: \_\_\_\_\_

Photo

Fact 1  
They have \_\_\_\_\_

Fact 2  
They eat \_\_\_\_\_

Fact 3  
They love \_\_\_\_\_

Closing sentence: \_\_\_\_\_

## Your Draft:

#  
What wild animals did you write about?

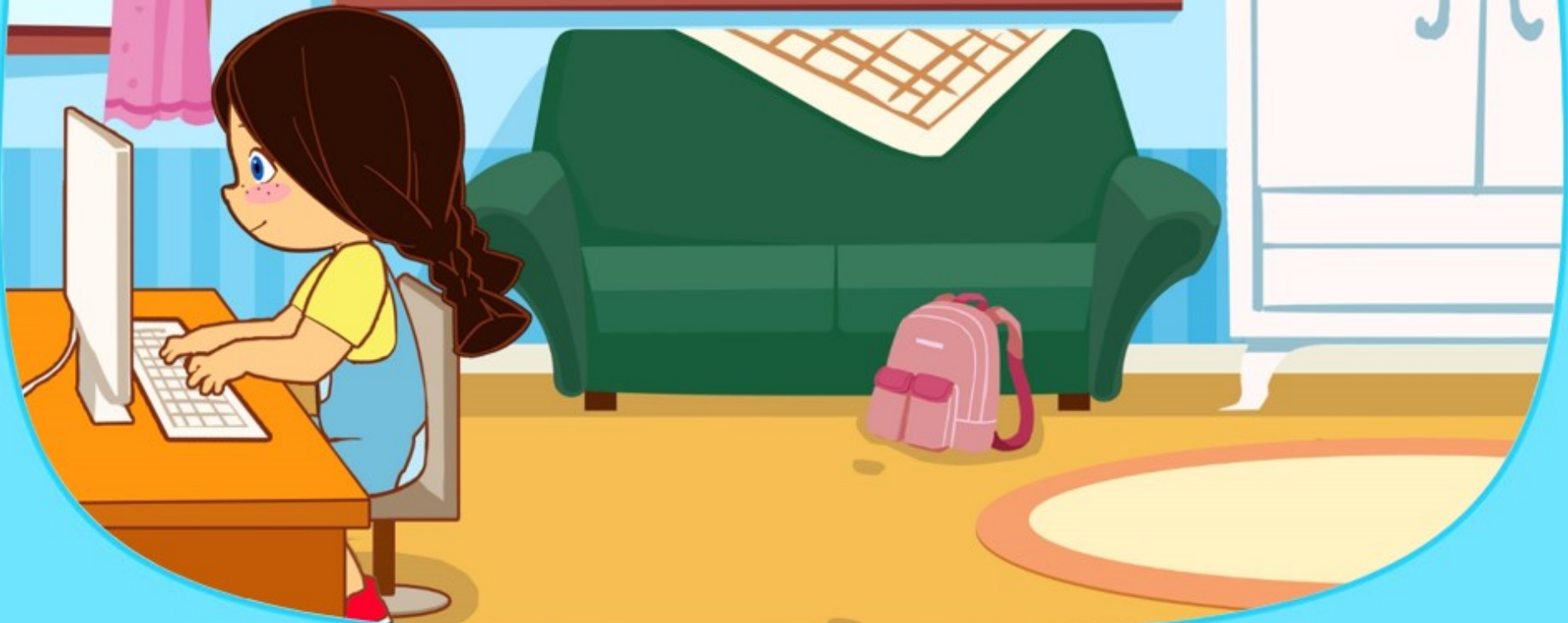
What did you know about them?

Do you have any ideas about your project?

Which wild animal will you choose?



Enrichment time!  
See you later!



# Goodbye

Level 4 Unit 2 Lesson 9



