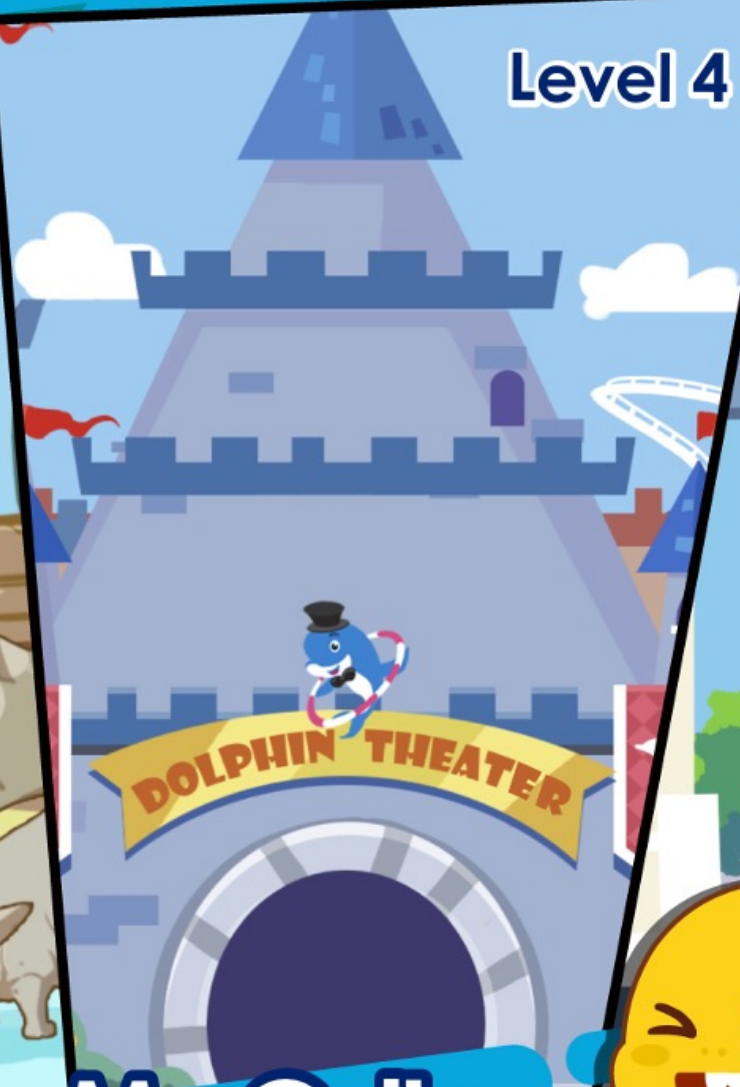



# My Country, My Culture

## My Country



# Reward System





# Warm Up

## Nice Mice

Mice, mice,

Eating all the rice,

• Nibble, nibble, nibble, nibble, •

Nice, nice, mice!



# Free Talk

I'm going to **China**. Can you tell me something about **China**?



# I Can Read



would

its

very

# Find the Sight Words



its

would

very

1. Would you like a cup of green tea?



2. I like China very much.



3. This is a panda. Its name is Jinjin.



# Vocabulary

China is a **country**. The U.S.A., the UK, and Japan are also some other **countries**. Which country are you from?

Map of the World



# Where do you live in China?

A **city** is a large and important town where many people live and work.



I live in Shanghai. It's a big **city** in China.



# Vocabulary



This is China's **flag**. It is a symbol of China.  
We can see the Chinese flag in many places.

# Vocabulary



This flag **represents** China. When you see a Chinese flag on something, you know it is Chinese.

# Vocabulary

The **government** is the group of people who are responsible for controlling a country or a state.



The central **government** of China is located in Beijing.

# Vocabulary



Beijing is the **capital** of China. A **capital** is the city where the government is.

# My City

There are many places or buildings that are easily recognized and help you know where you are. You can call them **landmarks**.

What is this **landmark**?



This is **the Great Wall**.

# Pre-Reading



What countries are there in Asia?



# My Country

中国地图



1 : 32 000 000

审图号：GS(2016)1571号  
国家测绘地理信息局 监制

My **country** is **China**. It is a very large country in Asia.

I live in a city called Beijing. Beijing is the capital of China. It is in the north of China.

The government of China can be found in Beijing.

# My Country



The national **flag** of China is a symbol of China. The national flag of China has 5 yellow stars on a red background. It **represents** China. A lot of people go to Beijing to watch the soldiers raise the national flag of China every day.



# My Country



You can also go to **the Great Wall**. The Great Wall was built a long time ago. There are many hills and mountains all around the Great Wall. The Great Wall was built to defend the borders. It is very big and long, but now it is just a **landmark**.

# Reader Detective

- 1 What can be found around the Great Wall?
- 2 Have you visited another country in the past?



# I Need a Tour Guide

中国地图



1 : 32 000 000

审图号: GS(2016)1571号  
国家测绘地理信息局 监制

I need help! I'm going to China very soon. Can you please tell me something about China?

This is \_\_\_\_\_. Beijing is the \_\_\_\_\_. That is the Chinese flag. It \_\_\_\_\_ China. It is \_\_\_\_\_ (color). There are 5 \_\_\_\_\_ on the flag.



# Grammar

are + not = aren't

They are not from China.



They aren't from China.



do + not = don't

They do not speak Chinese.



They don't speak Chinese.

# Grammar



are + not = aren't  
do + not = don't

They are not Chinese landmarks.

➔ They \_\_\_\_\_ Chinese landmarks.

They do not work for the government.

➔ They \_\_\_\_\_ work for the government.

## Soft "c"

ce

c

ci

ice

rice

face



city

civil

pencil

## Soft "c"

Extend

i

+

ce

=

ice



ri-ce = \_\_\_\_\_

ni-ce = \_\_\_\_\_

cit-y = \_\_\_\_\_

pen-cil = \_\_\_\_\_



# Listen and Circle



中国地图



1 : 32 000 000

审图号：GS(2016)1571号  
国家测绘地理信息局 监制





# Your Time

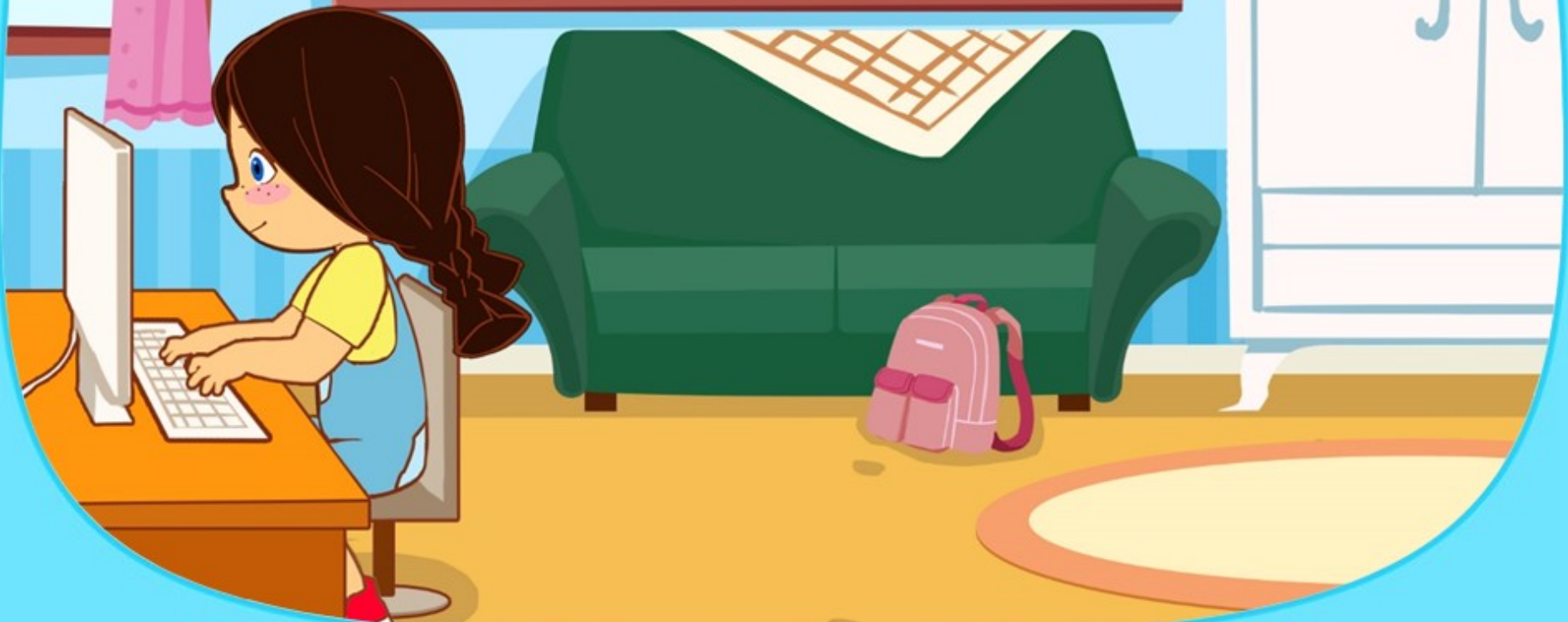
**What is the capital of China?**

**What does the Chinese flag look like?**

**Name one landmark in China.**



Enrichment time!  
See you later!



# Goodbye

Level 4 Unit 3 Lesson 1



