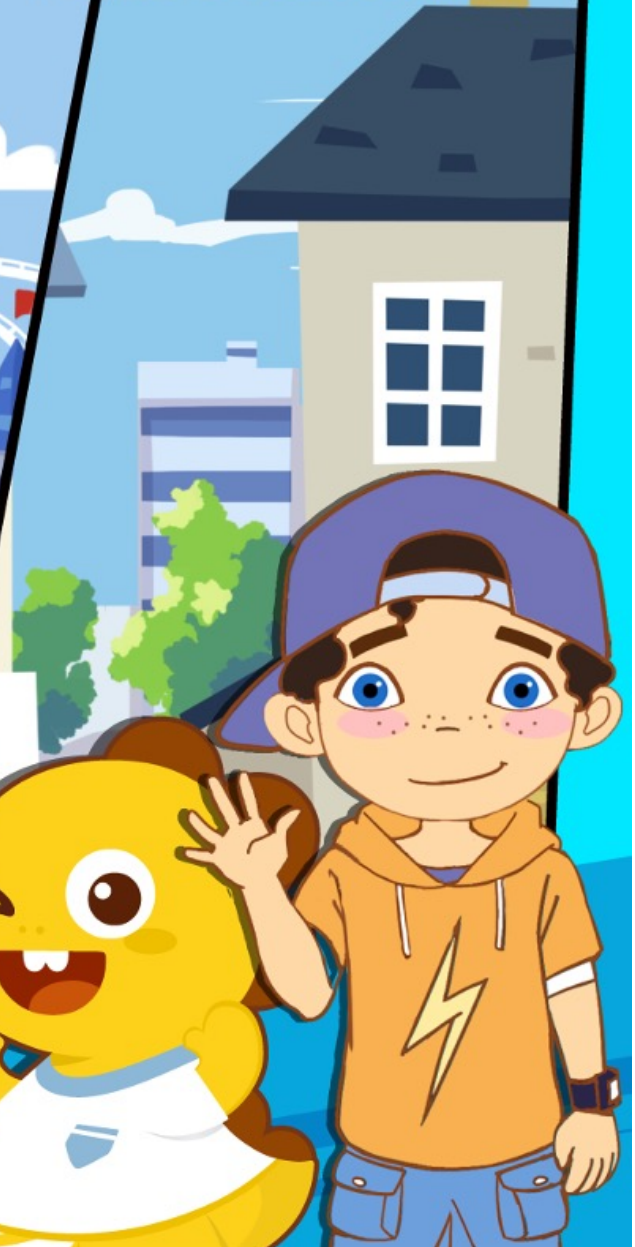



# My Country, My Culture

## My Country



# Reward System





# Warm Up

## China

What's the capital of China?

It's Beijing.

Who ruled ancient China?

Emperors ruled ancient China.

What are some famous landmarks in China?

The Great Wall, the Terracotta Warriors, The Forbidden City, and the Yellow Mountains are some famous Chinese landmarks.

# Free Talk



I want to go to other cities in China.  
Which cities do you know?



# I Can Read



would



very



its



around



your

# Find the Sight Words



its your would very around

1. The bird flies around and around.



2. Dumplings are your favorite food.



3. The Great Wall is very long.



4. This panda is three years old. Its sister is two.



5. I would like a Chinese fan.



# Vocabulary

**farmer** - a person who grows food and raises animals



The **farmers** are growing rice plants.

# Vocabulary

**village** - a small town in the countryside



In China, many farmers live in **villages**.



# Pre-Reading



How would you describe the area you live in?



# Wu Zetian

Chinese history is very long. Some people say China has over 5,000 years of history.

Long ago, China was ruled by emperors and empresses. At that time, there lived a woman named Wu Zetian.

The empire she lived in was called the Tang Empire. All the emperors of this empire were men. Many people thought that a woman could not be an emperor.



# Wu Zetian

Wu Zetian was the Emperor's wife. The Emperor was very old, and she did not love him. When the Emperor died, his son became the new Emperor and Wu Zetian became the new Emperor's wife!

However, Wu Zetian really wanted to become empress of the Tang Empire, so she did many things until she was.

Many people said she could not rule over China, but she did. She did a very good job ruling China. The people had lots of food and money. They were very happy.



# Reader Detective

1 Who was Wu Zetian?

2 Would you like to know more about the history of other countries? If so, why?



# Let's Talk



Do you want to live in a city or a village? Why?



# Grammar

is + not = \_\_\_\_\_

are + not = \_\_\_\_\_

were + not = \_\_\_\_\_

does + not = \_\_\_\_\_

do + not = \_\_\_\_\_

# Right or Wrong

1. The Great Wall dosnt represent China.

2. Shanghai isn't the capital of China.

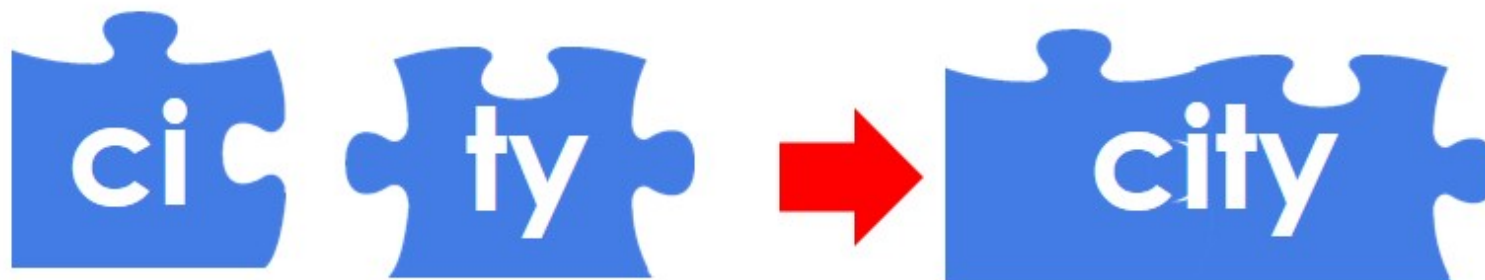
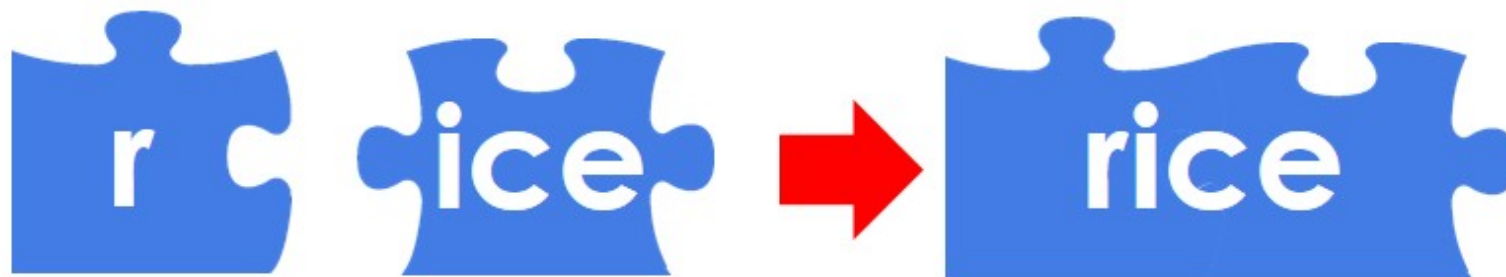
3. Many people dn't like hiking in the mountains.

4. The farmers aren't growing rice in the field.

5. The Terracotta Warriors arn't in America.



## I Can Read





# Soft “c”

Use the clues to fill in each blank.

rice city bicycle nice once

1. starts like run + ends like mice rice
2. starts like nine + ends like dice \_\_\_\_\_
3. starts like one + ends like fence \_\_\_\_\_
4. starts like circle + ends like pity \_\_\_\_\_
5. starts like bike + ends like motorcycle \_\_\_\_\_

# Soft "c" on the Great Wall

Extend

click

bicycle

clock

clack

cigar

cook

cent

cool

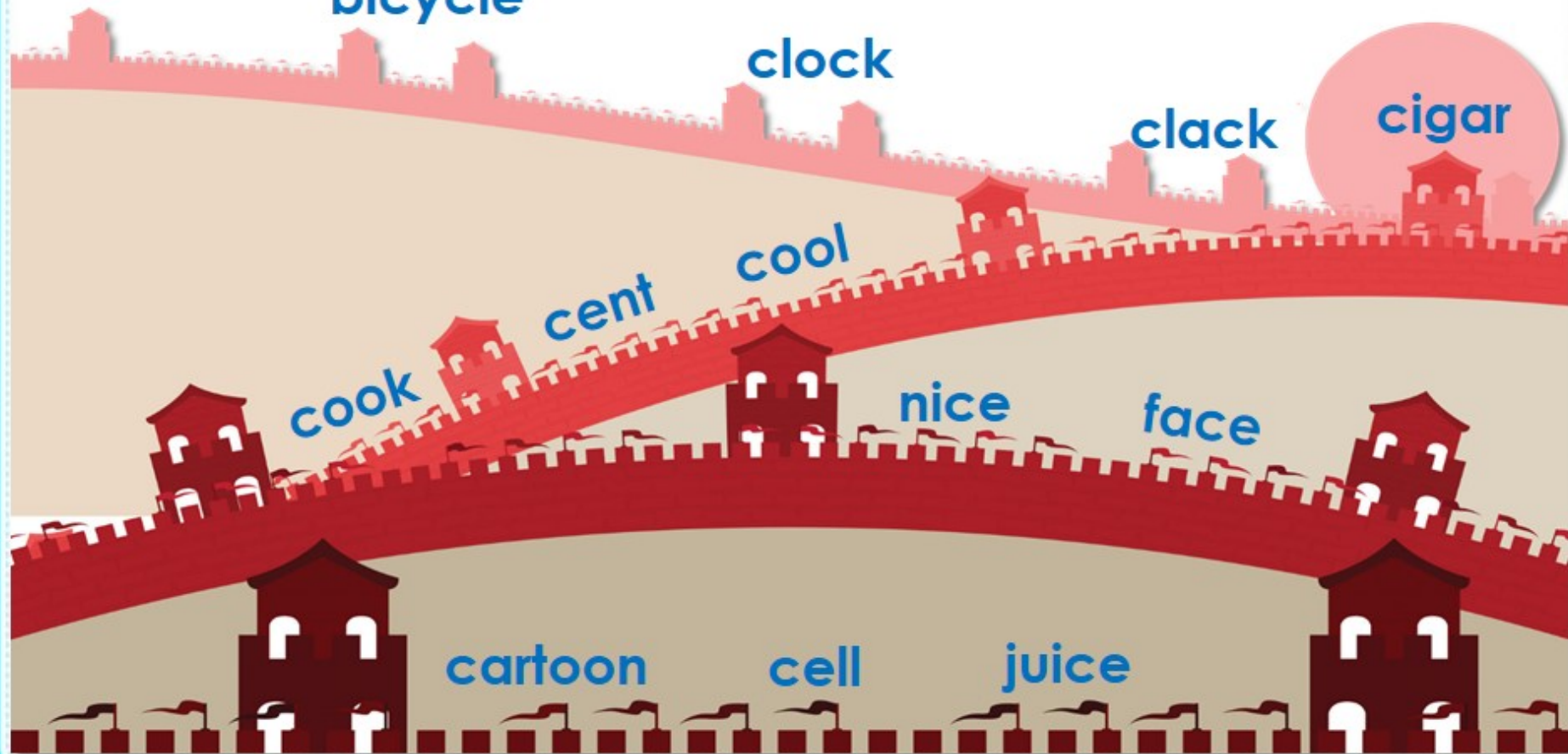
nice

face

cartoon

cell

juice



# Landmarks in China



**What are these landmarks? What do you know about these landmarks?**

# Match



farmers

village



city

mountains



# Speed Search

the Great  
Wall

flag

warrior

empress

landmark

mountain  
range

capital

history

Terracotta  
Warriors

# Crossword



2  
m  
o  
\_  
\_



4 T \_ \_ \_ \_ \_ W \_ \_ \_ \_ \_

5  
c  
\_  
\_  
\_  
\_

1 e \_ \_ \_ \_



3 e \_ \_ \_ \_



# Let's Discuss



1. What can you see in a village?
2. Where do you live, in a city or a village?
3. How is a village different from a city?

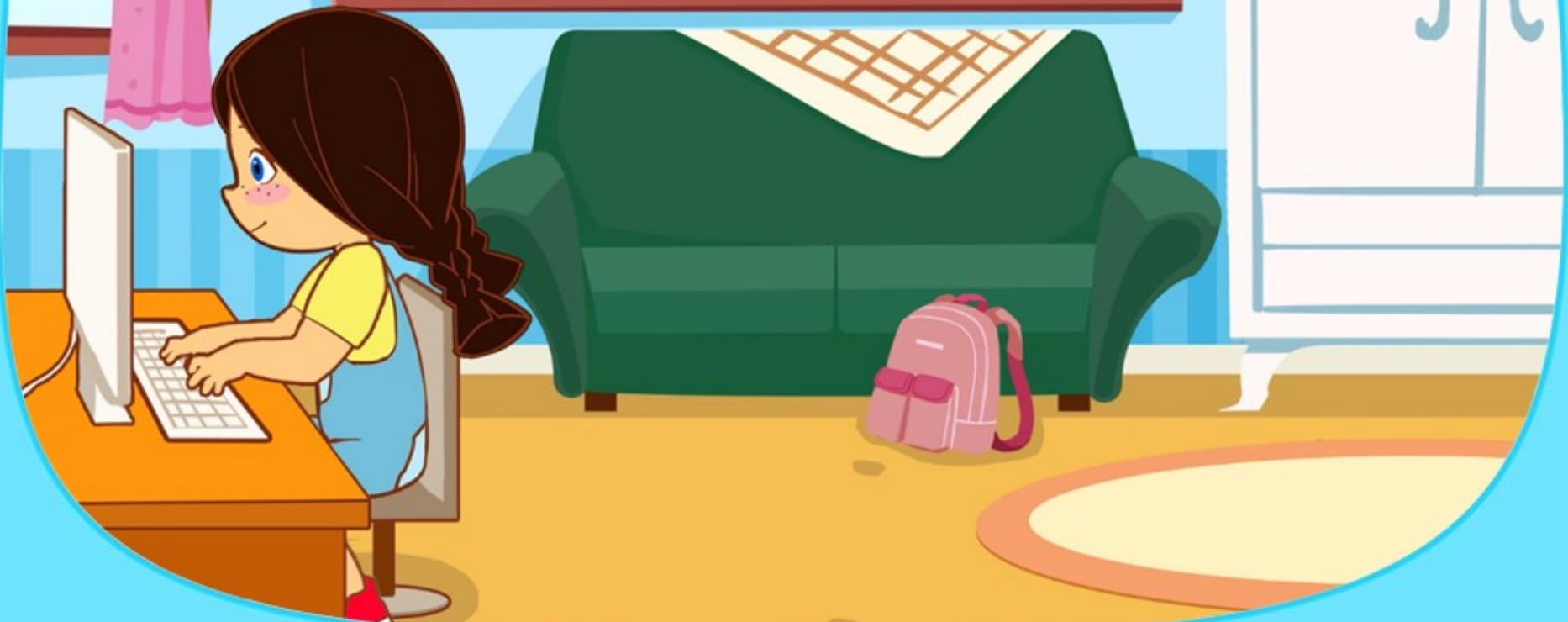
# I Need Your Help

Wow, I like this book. It is about where people live in China. Can you tell me more about it?





Enrichment time!  
See you later!



# Goodbye

Level 4 Unit 3 Lesson 5



